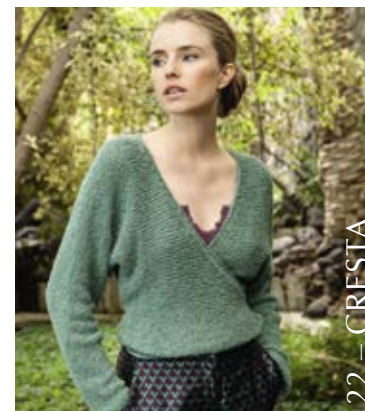
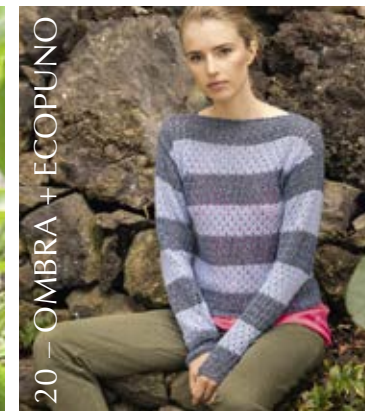


Vorletzte Seite Anleitungen

AL-Teil kommt von Frau Ruf/MXM



Ecopuno

215 m / 50g, X 4-4,5

72% Baumwolle + 17% Schurwolle Merino +
11% Baby Alpaka

Bottone

120 m / 50g, X 5

94% Baumwolle +
6% Polyamid

Cresta

100 m / 50g, X 5-6

76% Baumwolle +
24% Polyamid

Ombra

120 m / 50g, X 4-4,5

75% Baumwolle +
25% Polyamid

Pezza

70 m / 50g, X 8

75% Baumwolle +
25% Polyamid

4 Capi

135 m / 50g, X 4-4,5

87% Baumwolle +
13% Polyamid



275,25 MM



14 – ECOPUNO



15 – PEZZA







18 – 4 CAPI



19 – CRESTA



20 – OMBRA + ECOPUNO



21 – CRESTA + OMBRA



22 – CRESTA





23 - PEZZA



24 - ECOPUNO



LANA GRASSA

